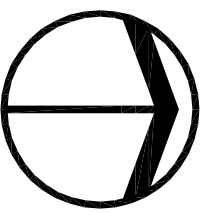
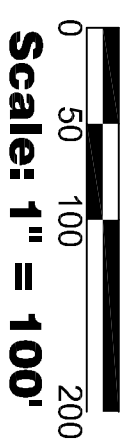


"FRUTH FARMS" Secondary Plat

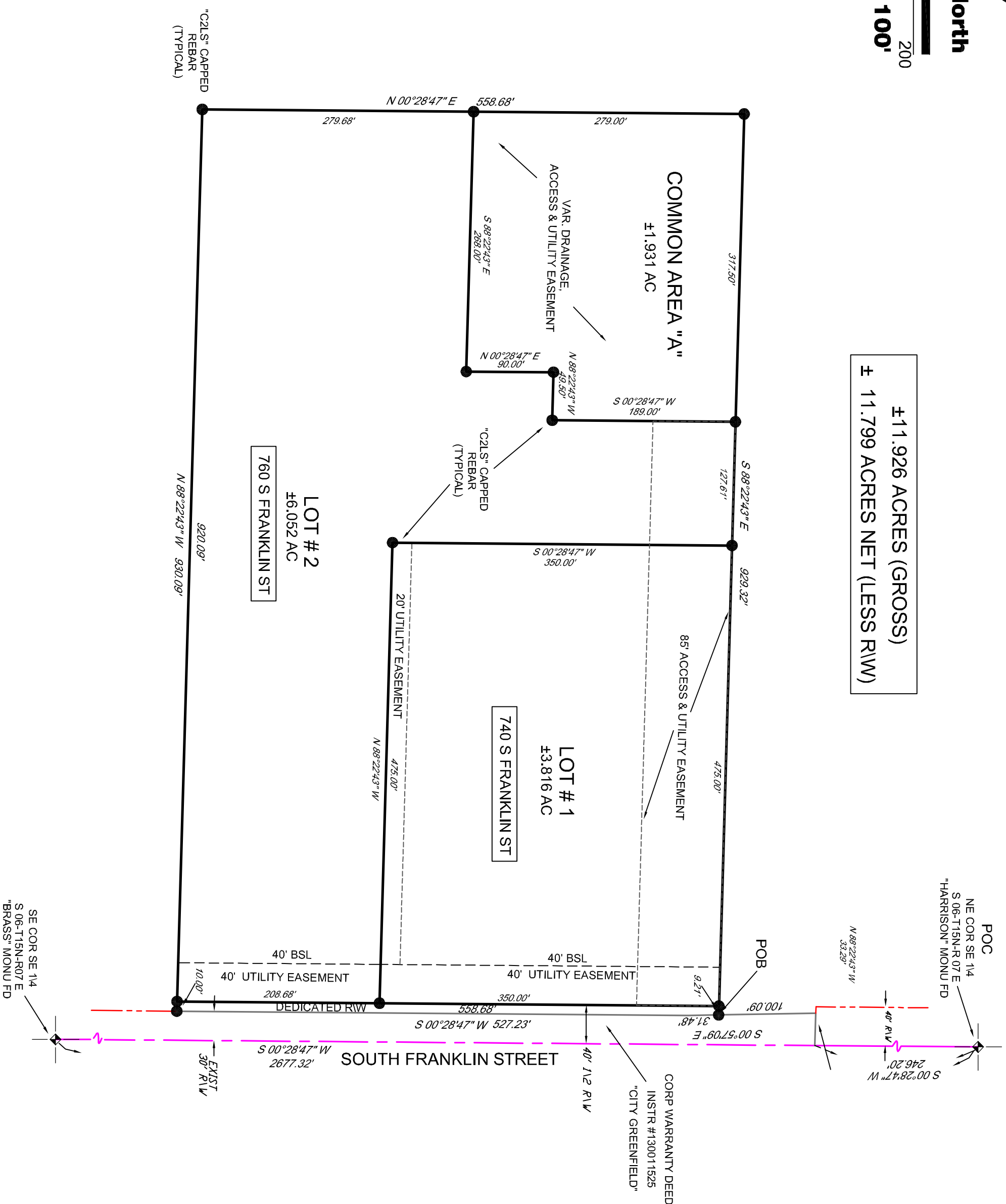
A part of S06-T15N-R07E, Center Township, Hancock County, Indiana



Assumed North



±11.926 ACRES (GROSS)
±11.799 ACRES NET (LESS RIW)



Prepared By:
Stephen M. Cooper
consulting & land services
corporation

303 West Main Street, Knightstown, Indiana 46148
Ph: (765) 345-5943 Toll Free: (888) 593-2967
Web: www.cooperconsulting.com Email: cooper@cooperconsulting.com

Subdivider:
City of Greenfield
10 South State Street
Greenfield, IN 46140

"I affirm, under the penalties for perjury, that I have taken reasonable care to recite each Social Security number in this document, unless required by law."

By: *Stephen Cooper*