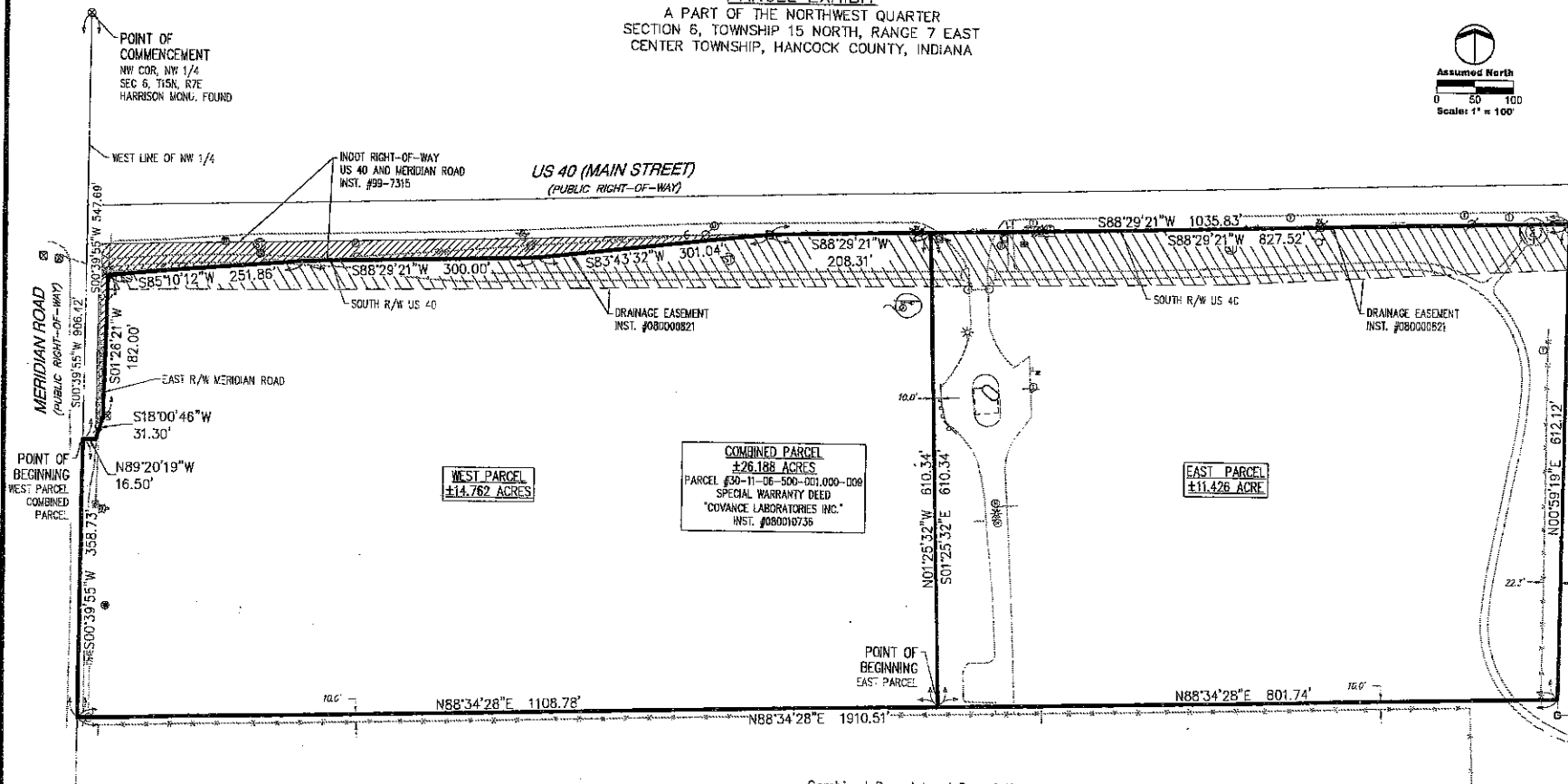
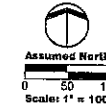


Ex A

**PARCEL EXHIBIT**  
A PART OF THE NORTHWEST QUARTER  
SECTION 6, TOWNSHIP 15 NORTH, RANGE 7 EAST  
CENTER TOWNSHIP, HANCOCK COUNTY, INDIANA



**West Parcel Land Description**

A part of the Northwest Quarter of Section 6, Township 15 North, Range 7 East, in Center Township, Hancock County, Indiana, being more particularly described as follows:

COMMENCING at the Northwest corner of said Northwest Quarter; thence South 00 degrees 39 minutes 55 seconds West (assumed bearing) along the West line thereof a distance of 547.69 feet to the POINT OF BEGINNING; thence continuing South 00 degrees 39 minutes 55 seconds West along the West line thereof a distance of 358.73 feet; thence North 88 degrees 34 minutes 28 seconds East a distance of 1108.78 feet; thence North 01 degrees 25 minutes 32 seconds West a distance of 810.34 feet to the South right-of-way of US 40; thence South 88 degrees 29 minutes 21 seconds East a distance of 301.04 feet; (2) thence South 88 degrees 29 minutes 21 seconds West a distance of 300.00 feet; (3) thence South 85 degrees 10 minutes 12 seconds West a distance of 251.86 feet; (4) thence South 01 degrees 26 minutes 21 seconds West a distance of 182.00 feet; (5) thence South 18 degrees 00 minutes 46 seconds West a distance of 31.30 feet; thence North 89 degrees 20 minutes 19 seconds East a distance of 16.50 feet to the POINT OF BEGINNING, containing 14.762 acres, more or less.

**East Parcel Land Description**

A part of the Northwest Quarter of Section 6, Township 15 North, Range 7 East, in Center Township, Hancock County, Indiana, being more particularly described as follows:

COMMENCING at the Northwest corner of said Northwest Quarter; thence South 00 degrees 39 minutes 55 seconds West (assumed bearing) along the West line thereof a distance of 906.42 feet; thence North 88 degrees 34 minutes 28 seconds East a distance of 801.74 feet; thence North 00 degrees 59 minutes 19 seconds East a distance of 612.12 feet to the South right-of-way of US 40; thence South 88 degrees 29 minutes 21 seconds West a distance of 301.04 feet; (2) thence South 88 degrees 29 minutes 21 seconds West a distance of 300.00 feet; (3) thence South 85 degrees 10 minutes 12 seconds West a distance of 251.86 feet; (4) thence South 01 degrees 26 minutes 21 seconds West a distance of 182.00 feet; (5) thence South 18 degrees 00 minutes 46 seconds West a distance of 31.30 feet; thence North 89 degrees 20 minutes 19 seconds East a distance of 16.50 feet to the POINT OF BEGINNING, containing 11.426 acres, more or less.

**Combined Parcel Land Description**

A part of the Northwest Quarter of Section 6, Township 15 North, Range 7 East, in Center Township, Hancock County, Indiana, being more particularly described as follows:

COMMENCING at the Northwest corner of said Northwest Quarter; thence South 00 degrees 39 minutes 55 seconds West (assumed bearing) along the West line thereof a distance of 547.69 feet to the POINT OF BEGINNING; thence continuing South 00 degrees 39 minutes 55 seconds West along the West line thereof a distance of 358.73 feet; thence North 88 degrees 34 minutes 28 seconds East a distance of 1108.78 feet; thence North 01 degrees 25 minutes 32 seconds West a distance of 810.34 feet to the South right-of-way of US 40; thence South 88 degrees 29 minutes 21 seconds East a distance of 301.04 feet; (2) thence South 88 degrees 29 minutes 21 seconds West a distance of 300.00 feet; (3) thence South 85 degrees 10 minutes 12 seconds West a distance of 251.86 feet; (4) thence South 01 degrees 26 minutes 21 seconds West a distance of 182.00 feet; (5) thence South 18 degrees 00 minutes 46 seconds West a distance of 31.30 feet; thence North 89 degrees 20 minutes 19 seconds East a distance of 16.50 feet to the POINT OF BEGINNING, containing 26.188 acres, more or less.

**Redaction Statement**

I affirm, under the penalties for perjury, that I have taken reasonable care to redact each Social Security number in this document, unless required by law. Christopher M. Cooper

This instrument was prepared by Christopher M. Cooper.

*Christopher M. Cooper*  
Christopher M. Cooper  
Professional Surveyor #21800010  
February 12, 2025  
E-Mail: ccooper@coorconsulting.com



**Notes:**  
This drawing is not intended to be represented as a retracement or original boundary survey, a route survey, or a Surveyor Location Report.

REVISIONS		
DATE	DESCRIPTION	BY

**coor**  
consulting & land services  
corporation

303 West Main Street, Knightstown, Indiana 46148  
765-345-5943 www.coorconsulting.com

A PART OF THE NORTHWEST QUARTER  
SECTION 6, TOWNSHIP 15 NORTH, RANGE 7 EAST  
CENTER TOWNSHIP, HANCOCK COUNTY, INDIANA

**PARCEL EXHIBIT**

CLIENT: CITY OF GREENFIELD  
SITE ADDRESS: W. MAIN STREET, GREENFIELD, IN 46140

DRAWN BY CMC	JOB NUMBER 2024-102
CHECKED BY MTL	
DATE February 12, 2025	
SCALE AS SHOWN	
SHEET	

1.1  
PARCEL EXHIBIT